

DEVIATORE OLEODINAMICO A COMANDO MECCANICO

MECHANICAL TIPPING VALVE

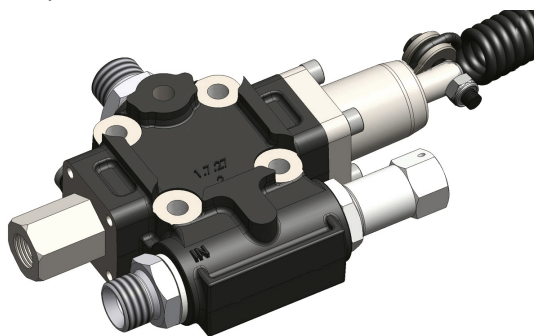
CODICE FAMIGLIA
FAMILY CODE

121010

“FM-40”



Optional



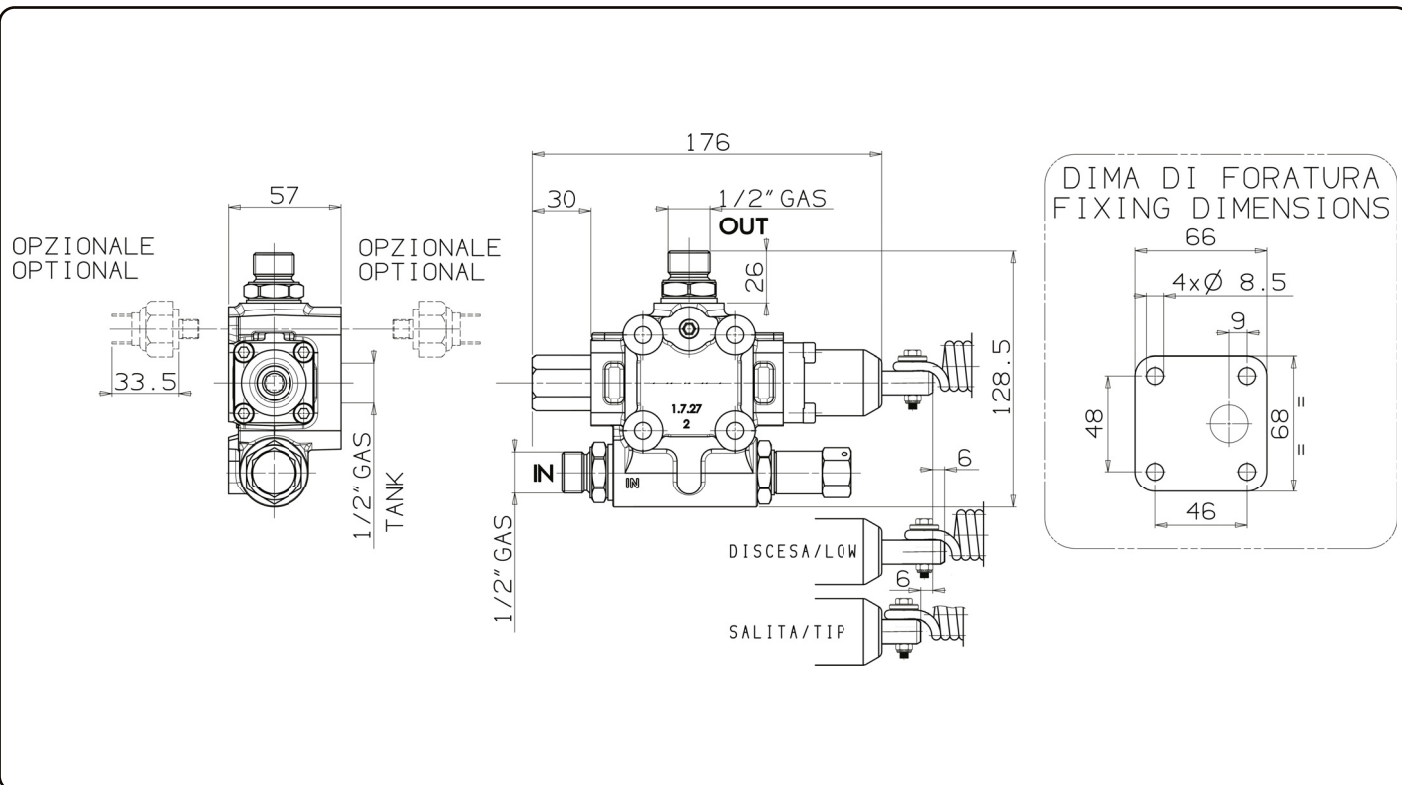
Valvola ad azionamento manuale (tramite telecomando tipo Linea o Linea “Block”), per il comando di ribaltabili leggeri, con schema idraulico a centro aperto in accordo alle direttive CE.

- Valvola di ritegno e valvola di massima pressione registrabile incorporate.
- Possibilità di montaggio a telaio oppure flangiata direttamente al serbatoio (DSM).
- Fine-corsa meccanico ad azionamento diretto con molla parastrappi.
- Predisposizione per segnalatore di pressione.
- Corpo zincato e cursore nichelato.
- Ingombri ridotti.
- Garantito per lavorare con olio a temperature $-15+110^{\circ}\text{C}$, campo di viscosità $12\div 100$ cSt e grado di filtrazione $25\ \mu\text{m}$.

Mechanical tipping valve operated by cable controls series LINEA or LINEA BLOCK to suit light duty tipper trucks. Open center hydraulic scheme according to CE standards.

- Built-in check and adjustable relief valves.
- Either Chassis or tank (DSM kit) mounting options.
- Mechanical Direct End-of-stroke with anti-shock spring.
- Ready for pressure signal switch mounting.
- Galvanized body and nickel spool.
- Compact size.
- Guaranteed for oil temperature range $-15+110^{\circ}\text{C}$, viscosity range $12\div 100$ cSt and oil filtering $25\ \mu\text{m}$.

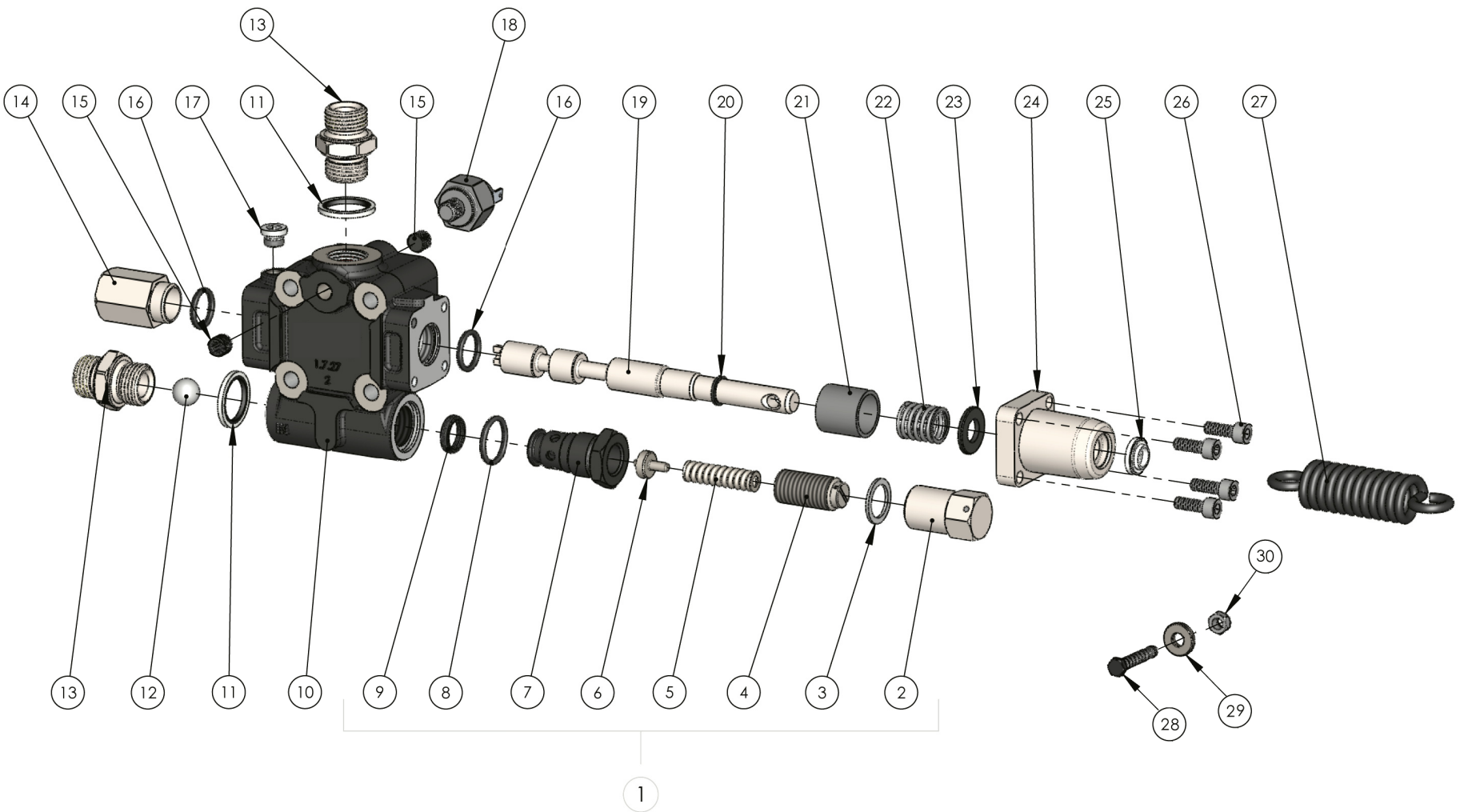
99740012120



13/01/2022

99712101003 Rev: AI

| Tipo deviatore Tipping valve type | Codice ordinazione Order code | IN | TANK | OUT | Peso Weight Kg |
|--------------------------------------|----------------------------------|------------------|------------------|------------------|----------------------|
| FM-40 CE | 12101000252 | ISO 228 G 1/2 | ISO 228 G 1/2 | ISO 228 G 1/2 | |
| | | | | | |
| | | | | | |
| | | | | | |



pag. 4

COMPANY WITH
QUALITY SYSTEM
CERTIFIED BY DNV GL
= ISO 9001:2015 =

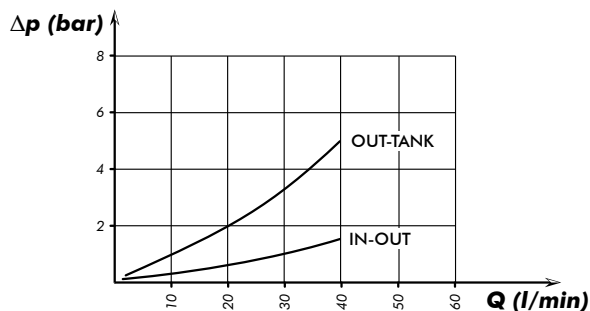
O.M.F.B. S.p.A. Hydraulic Components
We reserve the right to make any changes without notice.
Edition 2003.03 No reproduction, however partial, is permitted.
Via Cove, 7/9 25050 Poggio di Isèo (Brescia) Italy Tel.: +39 030 9830611
Fax: +39 030 9839207-208 Internet: www.omfb.it e-mail: conlatti@omfb.it



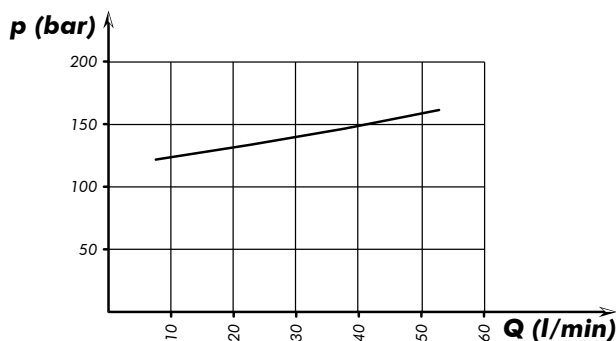
| N° | Codice / P. Number | Descrizione / Description | | Q. |
|----|--------------------|--|-------------------------------------|----|
| 1 | 12109000809 | Valvola di max | Relief valve | 1 |
| 2 | 54000600045 | Tappo CH=22 | Plug CH=22 | 1 |
| 3 | 11600900309 | Rondella alluminio 17x23x1,5 | Aluminium washer 17x23x1,5 | 1 |
| 4 | 50400000172 | Grano registro | Register dowel | 1 |
| 5 | 51200500983 | Molla valvola di max | Max valve spring | 1 |
| 6 | 54300100142 | Perno di tenuta | Seal hinge | 1 |
| 7 | 52000600289 | Corpo valvola max cartridge | Max valve cartridge body | 1 |
| 8 | 50600200158 | Guarnizione OR (2,62 x 20,24) | O-Ring (2,62 x 20,24) | 1 |
| 9 | 50600000507 | Guarnizione Ø 14 | Gasket Ø 14 | 1 |
| 10 | 52000300424 | Corpo deviatore | Distributor body | 1 |
| 11 | 11600910129 | Rondella acciaio-gomma (21,5x28,5x2,5) | Steel-rubber washer (21,5x28,5x2,5) | 2 |
| 12 | 51000900143 | Sfera 17/32" | Ball 17/32" | 1 |
| 13 | 11600600106 | Nipplo doppio 1/2" x 1/2" | Nipple 1/2" x 1/2" | 2 |
| 14 | 54000500377 | Tappo | Plug | 1 |
| 15 | 50401000063 | Grano conico 1/8" | Grub screw 1/8" | 2 |
| 16 | 50600200112 | Guarnizione OR (2,62 x 15,88) | O-Ring (2,62 x 15,88) | 2 |
| 17 | 10099000028 | Tappo 1/8" | Plug 1/8" | 1 |
| 18 | 12200900011 | Idrostop (OPTIONAL) | Pressure switch (OPTIONAL) | 1 |
| 19 | 53600300636 | Cursore Ø 16 | Spool Ø 16 | 1 |
| 20 | 50100000258 | Anello seeger | Circlip | 1 |
| 21 | 53400100436 | Anello guida molla | Spring guide ring | 1 |
| 22 | 51200501311 | Molla ritorno | Return spring | 1 |
| 23 | 52900000116 | Rondella rasamento | Trim washer | 1 |
| 24 | 53700400393 | Cilindro | Cylinder | 1 |
| 25 | 50600001828 | Guarnizione raschiatore poliuretano | Polyurethane scraper seal | 1 |
| 26 | 50200200441 | Vite TCE M6x18 | Screw TCE M6x18 | 4 |
| 27 | 51200300047 | Molla trazione finecorsa | Limit switch traction spring | 1 |
| 28 | 50200200085 | Vite M6x30 UNI 5739 | Screw M6x30 UNI 5739 | 1 |
| 29 | 50501000016 | Dado autobl. M6 | Self locking nut M6 | 1 |
| 30 | 53000100934 | Distanziale | Spacer | 1 |

| Tipo deviatore Tipping valve type | Codice ordinazione Order code | Pressioni Pressure values | | Portata Flow l/min |
|--------------------------------------|----------------------------------|---|--|------------------------------|
| | | Taratura standard Standard pressure setting bar | Taratura massima Max. pressure setting bar | |
| FM-40 CE | 12101000252 | 140 | 240 | 40 |

Perdite di carico deviatore
Tipping valve pressure drops



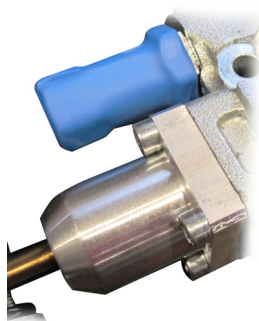
Curva caratteristica p-Q valvola di massima
p-Q operating curve for pressure relief valves



Rilievi eseguiti con olio ISO VG 46 a 40°
The graph refers to oil type ISO VG 46 a 40°

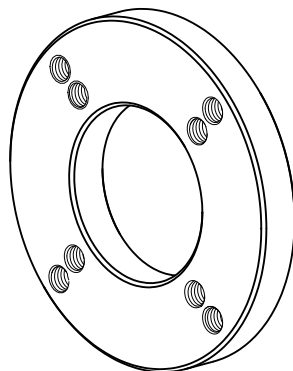
99740012120

OPTIONAL
Sigillo di garanzia/Safety sealing
12190100129

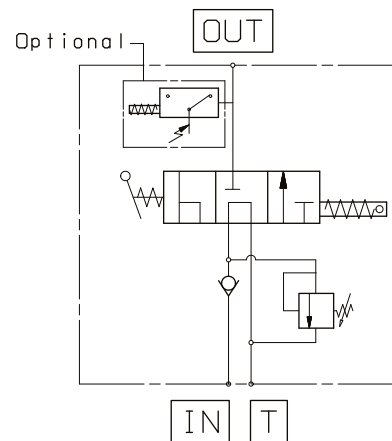


Da ordinare separatamente
Must be ordered separately

Piastra fissaggio
Mounting plate for tank
12199100112

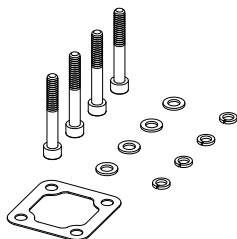


Schema di funzionamento
Functional diagram



13/01/2022

Kit guarnizioni :
Seal kit:
12190000559



Kit fissaggio codice: 12199400306
Mounting kit p/n:

| Q.tà Q.ty | Descrizione Description | |
|--------------|----------------------------|-------------------|
| 4 | Vite TCE M8 L=60 | Screw M8 TCE L=60 |
| 4 | Rondelle piane per M8 | Washer M8 |
| 4 | Rondelle elastiche per M8 | Spring washer M8 |
| 1 | Guarnizione piana | Gasket |

99712101003 Rev: AI